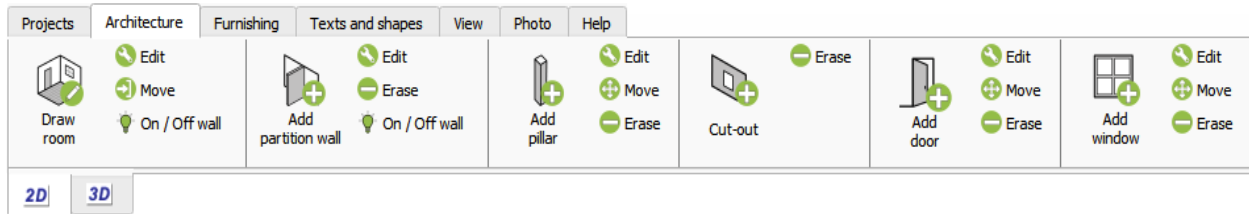


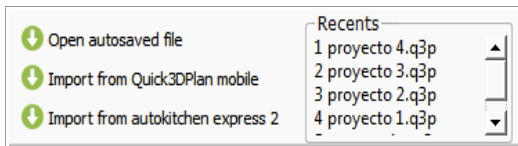
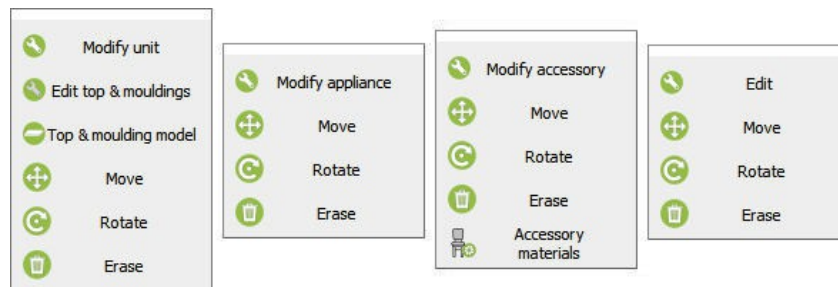
# QUICK3DPLAN DS FEATURES

## 1.- Quick3DPlan DS for Windows/Mac Main Features

**Tabs:** The new Quick3DPlan® includes an updated interface with tabs that show all the available options for architecture, furnishing, views... reducing the number of mouse clicks.

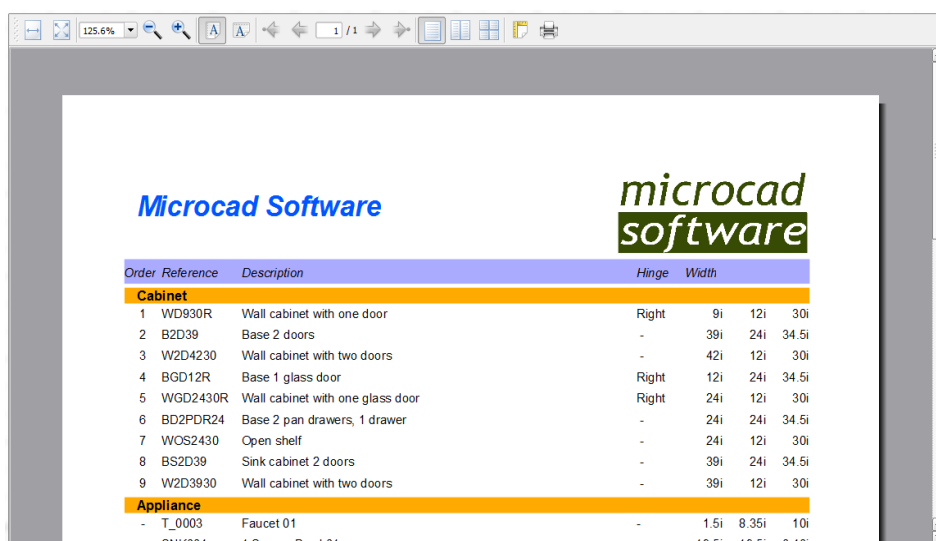


A menu appears when right-clicking on a cabinet, appliance, accessory or closet. The menu allows you to edit, rotate or erase a selected unit among other options.



**Files:** With only one click you have access to the last projects and the security copy that Quick3DPlan® saves in case the program closes down unexpectedly.

**Print:** Quick3DPlan® includes a new print preview window for images and reports. You can enter your company name, company logo and page footer.




Now the program is updated automatically whenever the program starts, so the user will always have the latest version available without having to do anything (*\*Notice that an Internet connection is required in order to use the updates for Quick3DPlan®*):

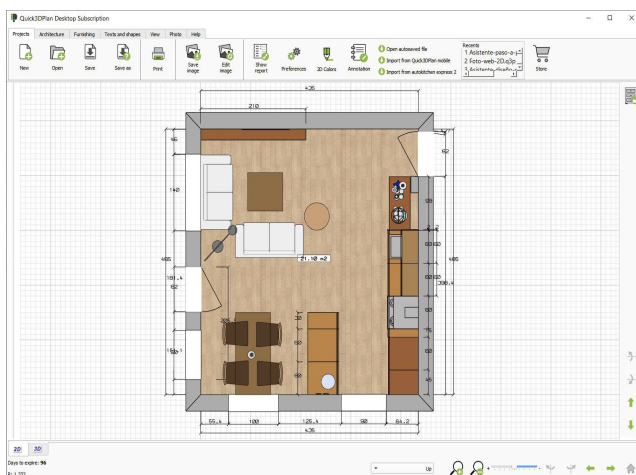



**Undo:** Possibility to undo some of the last modification by pressing on the "**CONTROL + Z**" keys.


**autokitchen Express 2:** You can open a project, developed on an iPad with [autokitchen® express 2](#), and finish it with Quick3DPlan® on your computer.



 You can design in 2D or 3D with Quick3DPlan®, and go back and forth between the two. It generates a color or B/W floor plan with dimensions and 3D perspectives with finishes and lighting.



 Achieving the perfect perspective is simple using the mouse to move the camera around the kitchen. You can save with a name as many positions of the camera as you want.

 You can select from a list of room shapes and change the dimensions, or you can draw your own walls of any length and angle. You can also insert columns, knee walls, doors, and windows of any dimension.



More than 400 materials for the walls and the floor, including paints, tiles, marbles, parquets ...



Quick3DPlan® has an extensive universal catalog of more than 3000 cabinets, 18 door styles and 12 door pulls.



Cabinet dimensions can be modified before or after placement in a design. You can select the door and pull model for a specific cabinet. Crown molding and light rails can be placed on wall cabinets and countertops, backsplashes and toe kicks on base cabinets.



There are 600 cabinet and door finishes including woods and colors, and 150 countertop finishes like marble, granite, stone, wood and colors.



Quick3DPlan® includes appliances like refrigerators, faucets, sinks, hoods, washer-dryers, dishwashers, ovens and microwaves. Their dimensions can be changed before or after insertion.

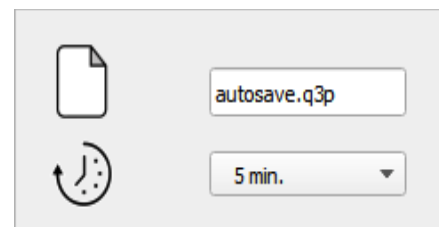


When you are finished with the design, Quick3DPlan® will generate a list of cabinets, appliances, countertops and moldings, including the cabinet reference code, description and dimensions. You can open this list with Excel® or with Estimate 4 (optional).

## 2.- Autosave function, language and design units

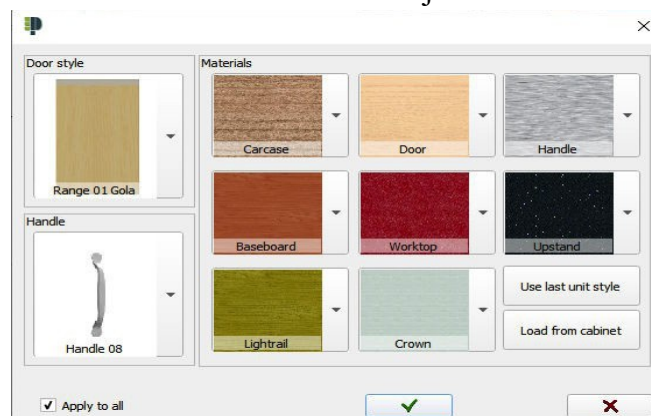
The user preferences allow you to change the design units and the language (Spanish or English) without closing the program. When you change the design units, you also change the catalog. If you select inches, the available catalog will be an American frameless catalog. If you select centimeters or millimeters, the catalog will be European.

The time between security copies (*autosave*) can also be configured from the user preferences. In the case of an unexpected close you can recuperate the last project by selecting the option "*Open autosave file*".

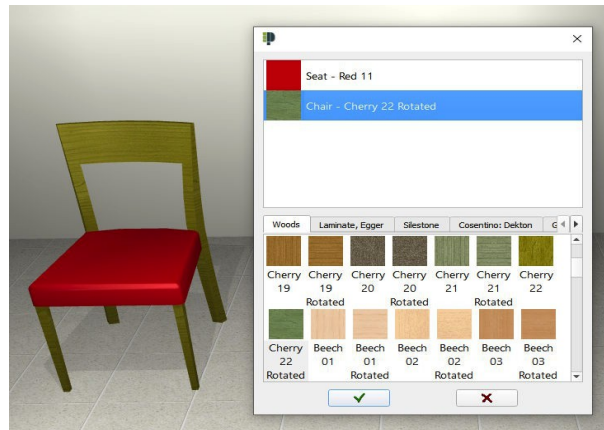


## 3.- Materials

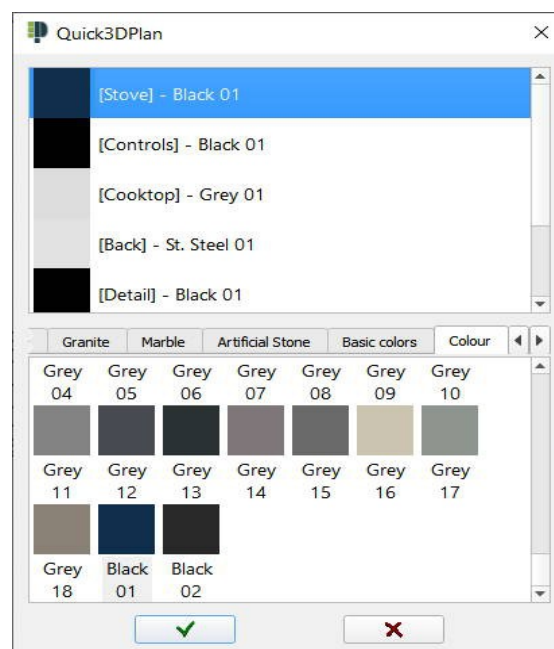
The Unit Style window allows you to select the door style, the handle and the finishes of the door, handle, box, baseboard (toe-kick), crown molding, light rail, countertop and backsplash. These changes can be done for all the cabinets in the kitchen or just for one.



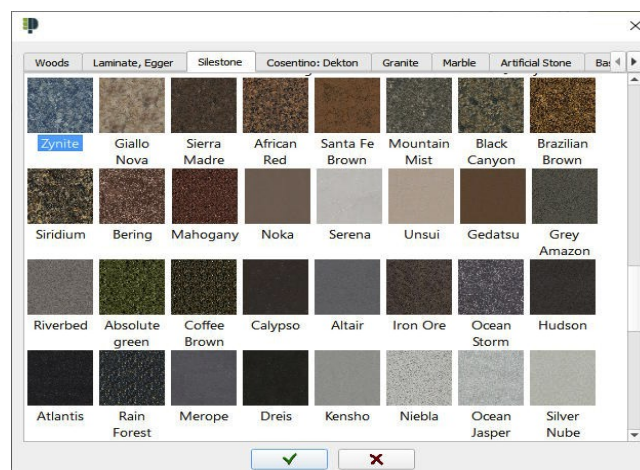
The cabinets are inserted with the last selected materials and door style.  
 You can change the materials of the different parts of the accessories (tables, chairs, shelves, panels, bottles, plants ...).



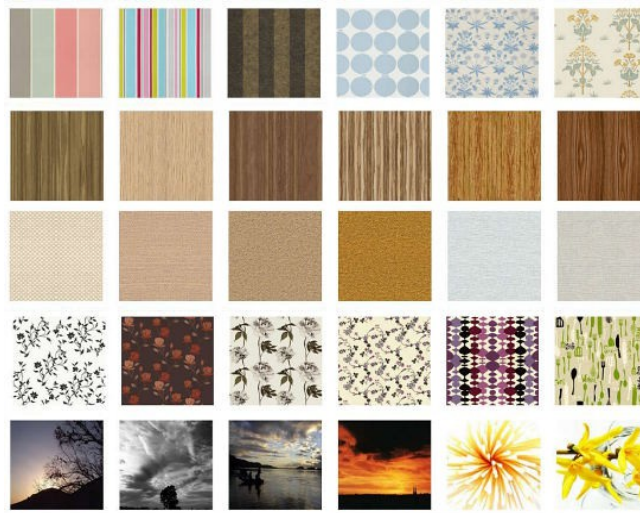
New option to change the appliances materials:



More than 400 materials available: colors, woods, Formica...



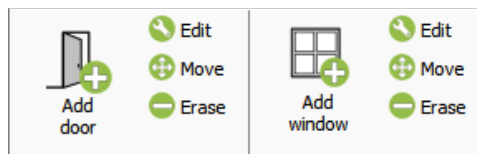
The material catalog includes new woods, colors, fabrics, granites and a selection of materials from **Silestone**, **Dekton** and **Egger**.



#### 4.- Architecture

Buttons to change doors and windows in the drawing:

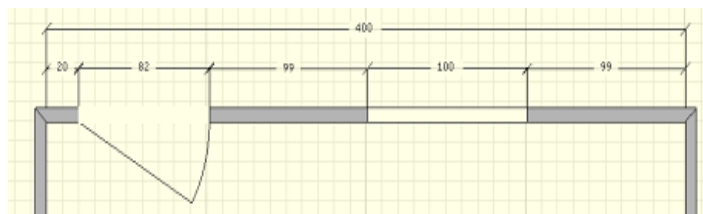
- Move door/window.
- Change dimension or change model of door/window.



While drawing walls the program shows two lines with the wall thickness and its length. The wall length can be set with the mouse on the screen or by typing its value.

When inserting a door or window its position can be set with the mouse or by typing the distance to the wall corner.

The 2D plan shows the distance between doors, windows and wall corners.



**Edit wall:** Allows you to change the height and thickness of the internal and external walls of the room.



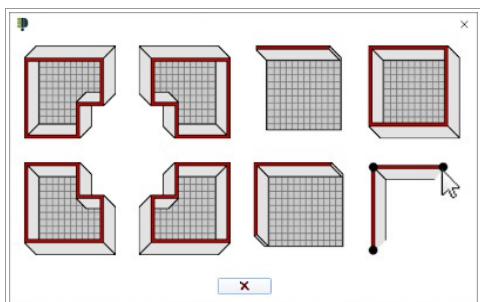
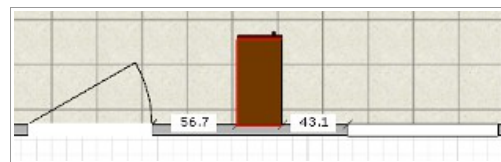
**Move wall:** Allows you to move the external walls to change the room size.



**Center door and window:** There is a new option to center a door or a window on a wall without having to enter any distances.



**Collision with doors and windows:** When inserting a cabinet, appliance or accessory, Quick3DPlan® prevents it from colliding with doors and windows, and shows the remaining distance to the nearest door and window while dragging the item.

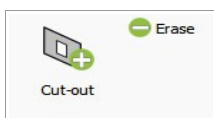


**Draw room:** A new dialog where you can select your room layout among five options or you can draw the room manually by clicking on the screen.



**Move pillar:** You can move the pillars of the kitchen accurately by entering the distance with the keyboard.

Internal walls with several segments. Accurate control of the length of each segment and its position on external walls. Now doors and windows can be inserted on the internal walls.

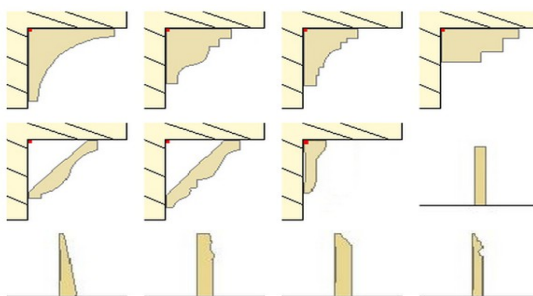


Rectangular openings on internal and external walls.

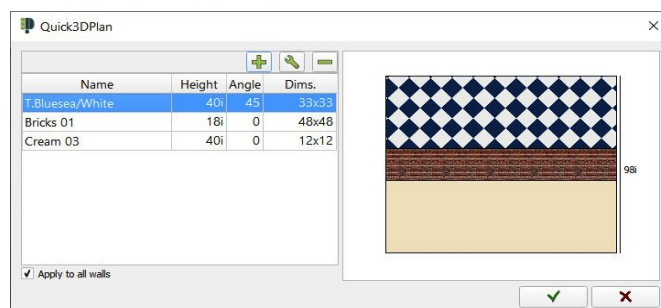
Command to hide walls in the design allows you to design open kitchens. The removed walls will disappear from the 2D and the 3D views.



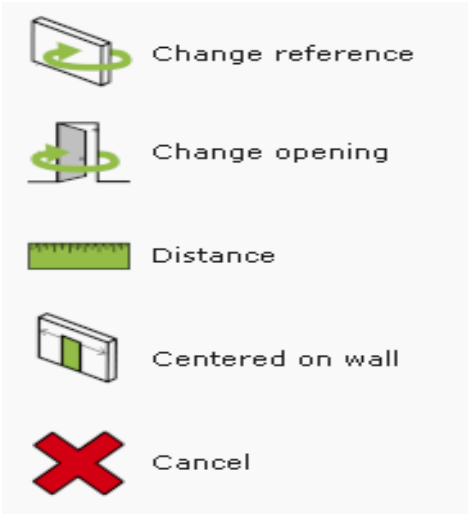
Command to place a cornice (crown molding) and/or a plinth on a wall automatically. Once inserted, you can change their material with a specific command located in the Photo tab.



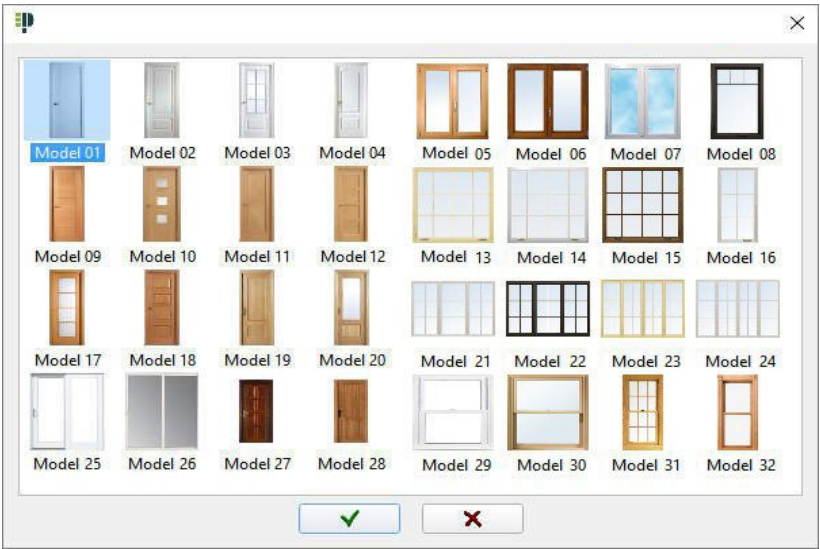
Command to apply a combination of materials horizontally to a wall. This new feature is very useful to create a backsplash.



New toolbar for door and window insertion that allows you to define its position on the wall with a distance to the right or left corner.



New architectural door and window models:

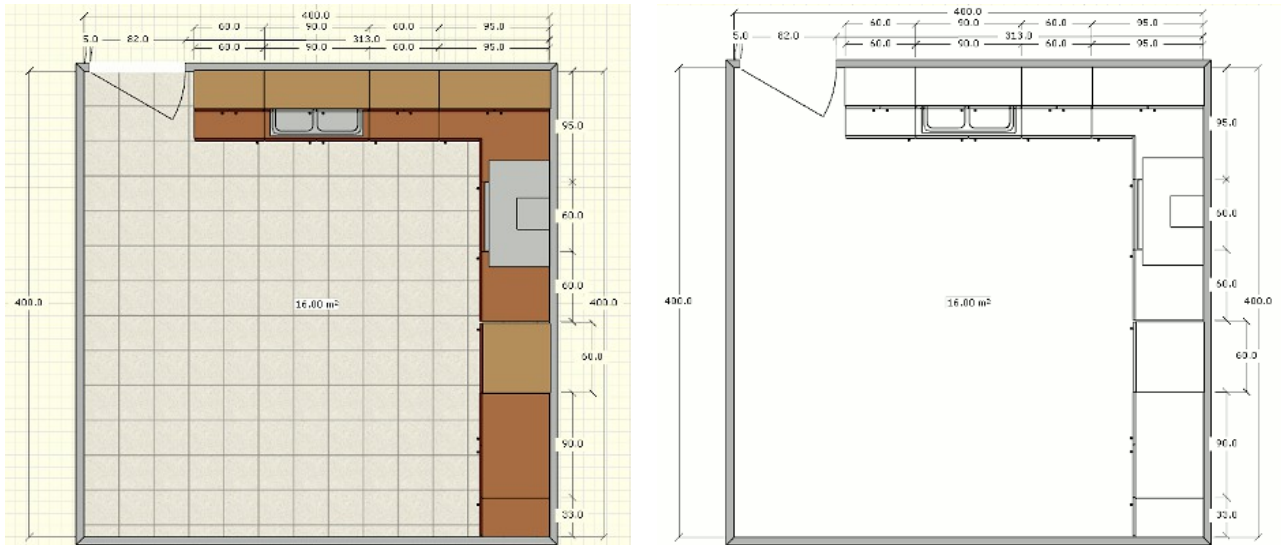


Many floor and wall materials: tiles, bricks, colors and wooden floor, etc.

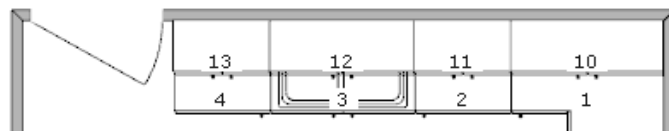


## 5.- 2D Plans

**2D colors:** You can chose between white or cream color for the background. You can also print your floor plans in black and white or solid colors.



**Cabinet label:** You can turn on and off cabinet labels on the floor plan. These labels are automatically inserted with the cabinet depending on its insertion order and are also included in the report printing.

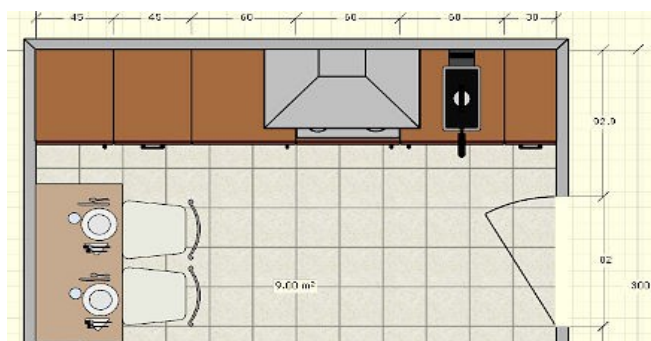


**Distance between two points:** New tool to calculate the distance between two selected points in the design.

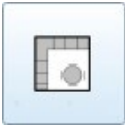
Different colors can be selected to fill the following cabinets and appliances on the floor plan:

- Base and tall cabinets.
- Wall and "on the counter" cabinets.
- Fridges.
- Hoods.
- Sinks.

The walls are filled in gray color and the doors and windows show the opening on the wall.



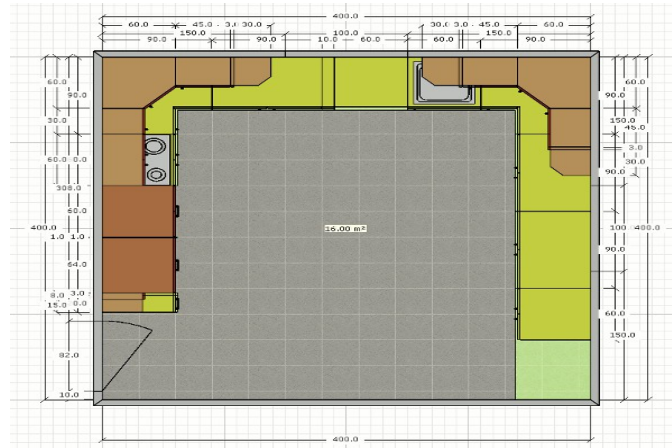




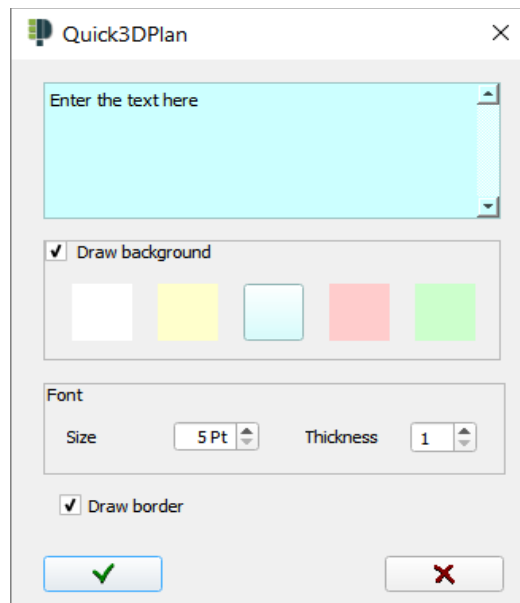
New option to generate a floor plan with lines to print dimensioned drawings.

Option to change 2D color view to b/w view with only one click.

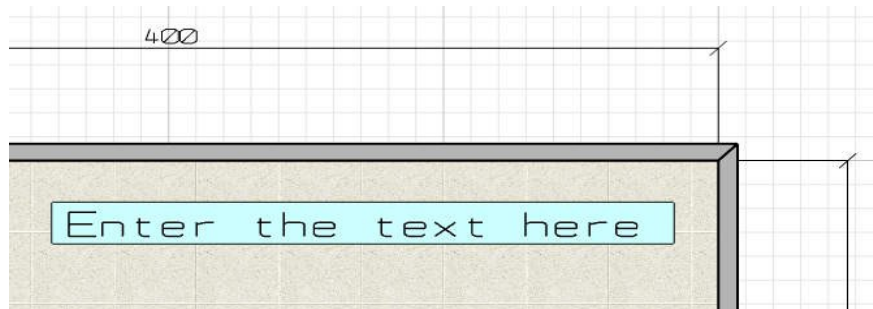
The countertop is now shown in 2D view in a translucent color that can be customized. If the countertop is hidden, the 2D view looks the same as in previous versions.



Tool to add text to the 2D plan in different colors, where you can select the font size and thickness, whether you want a black frame or not, etc:

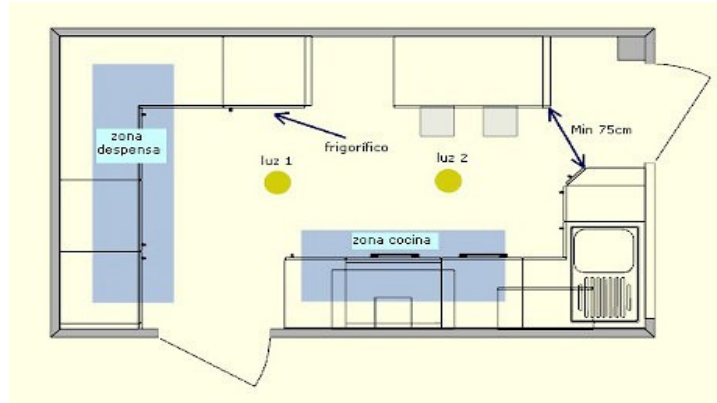


Then, place the text using the mouse in the design:

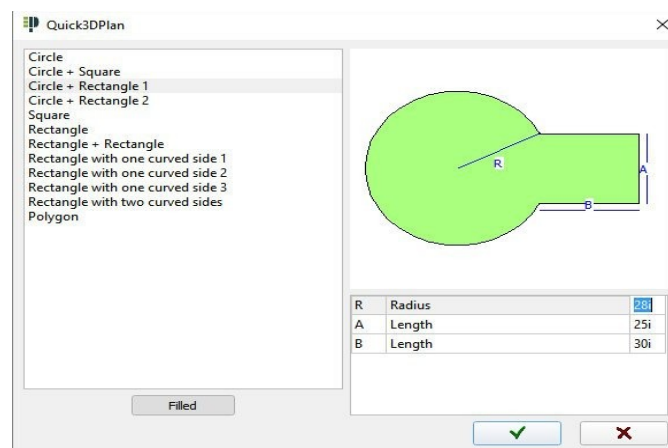


After inserted the text can be moved, it can be modified by double-clicking on it and deleted with the rubber.

Drawing of separate lines controlling thickness, color and with the possibility of adding one or two arrows at the extremes. Insertion of shapes: circle, square, rectangle and polygon with any number of sides.



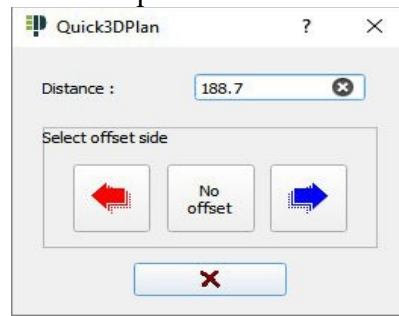
Predefined shapes useful to design countertops. They can be resized before insertion and rotated once inserted:



New front views with dimensions automatically generated. The dimensions can be erased or moved. Once adapted to the designer requirements, it can be saved as an image or printed.



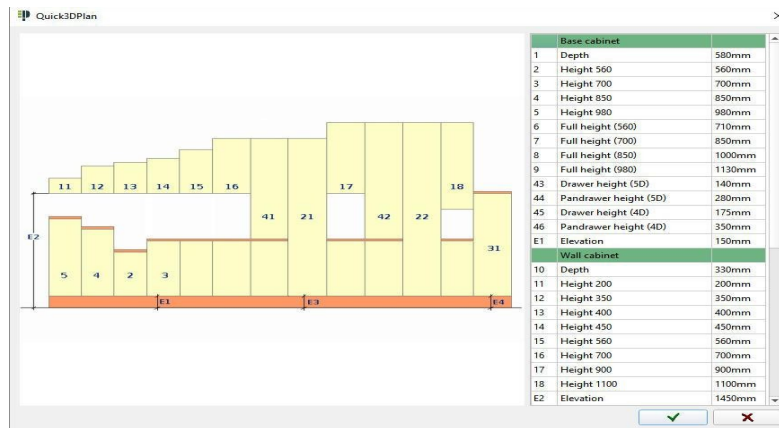
You can now insert a dimension in the floor plan with the real measure or a selected value.



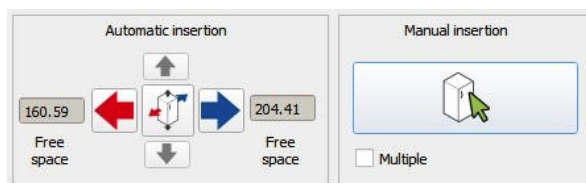
New option to erase a dimension automatically inserted by Quick3DPlan® on a wall or a cabinet.

## 6.- Furniture, accessories and electrical appliances

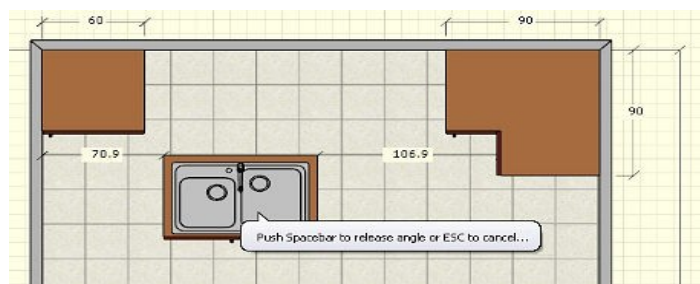
The cabinet catalogue can be customized. The user can change the dimensions of the different types of cabinets and save the changes in the program:



**Automatic insertion.** New "up" and "down" arrows in the furniture insertion window to place a new cabinet on top of or below another cabinet automatically. In the accessory insertion window, a new "up" arrow allows inserting an accessory on top of another accessory, appliance or cabinet automatically without changing the elevation value.



**Manual insertion.** While moving a cabinet, accessory or appliance with the mouse, the program shows the free distance on both sides.

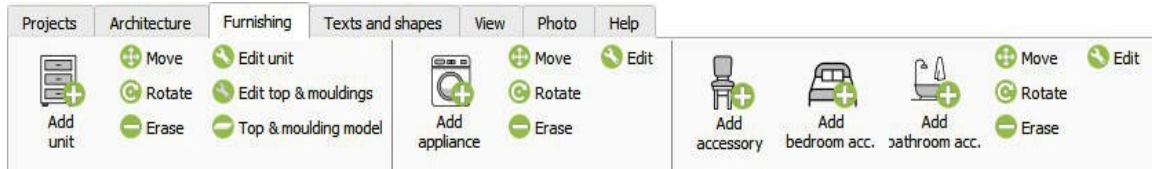




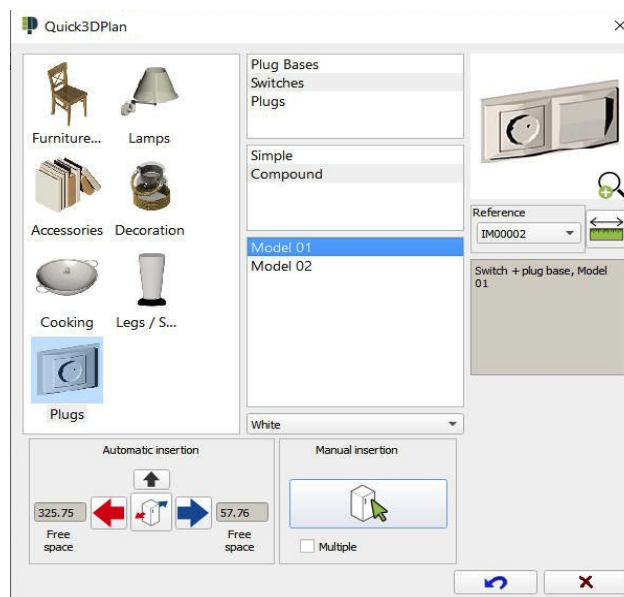
Cabinets, accessories and appliances can be locked in order to prevent unintended movement with the mouse.

Once inserted, you can:

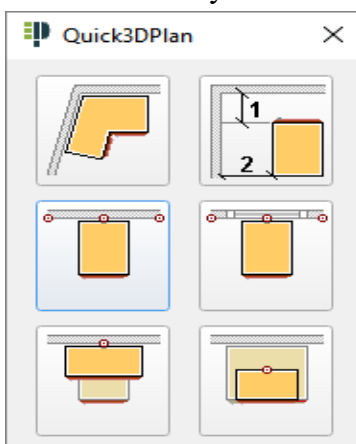
- Change/substitute a cabinet.
- Change/substitute an accessory.
- Change/substitute an electrical appliance.
- Change/substitute a bathroom accessories.



The new Quick3DPlan® includes new cabinets, hoods, sinks, faucets, ovens and cooktops. It also includes new accessories like brackets, plug bases and switches.

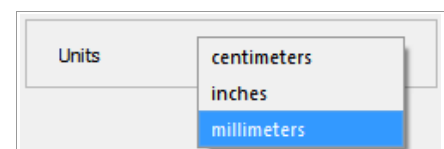


**Insertion options:** New special insertion options that allow you to insert a cabinet easily and accurately in the following cases:



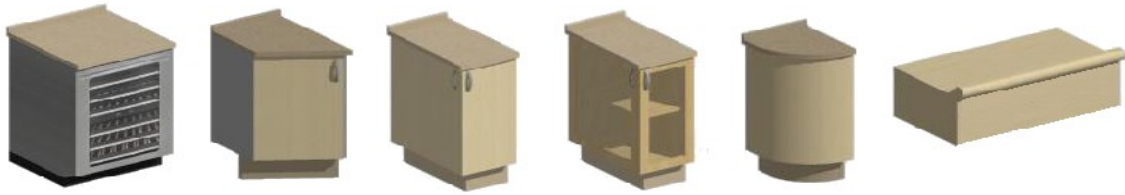
- Corner cabinet insertion adjusted to the wall corner angle.
- Insert island cabinet at a specified distance from two selected walls.
- Insert cabinet centered on a selected wall.
- Insert cabinet centered on a selected window.
- Insert cabinet centered on another selected cabinet aligned on the back.
- Insert cabinet centered on another selected cabinet aligned on the front.

**Catalog in mm:** Apart from centimeters and inches you can now also design in millimeters with a European style catalog.





**Cabinet catalog update:** The American (inches) and European (mm and cm) catalogs have been updated with cabinets requested by our customers: new base cabinet with a wine cooler or small fridge, end cabinets with two doors, curved end cabinet, soffit...



**Wide variety of sink models:**



A sink wider than the sink cabinet can be inserted with the bowl centered on the cabinet and the drainer on the unit beside it.



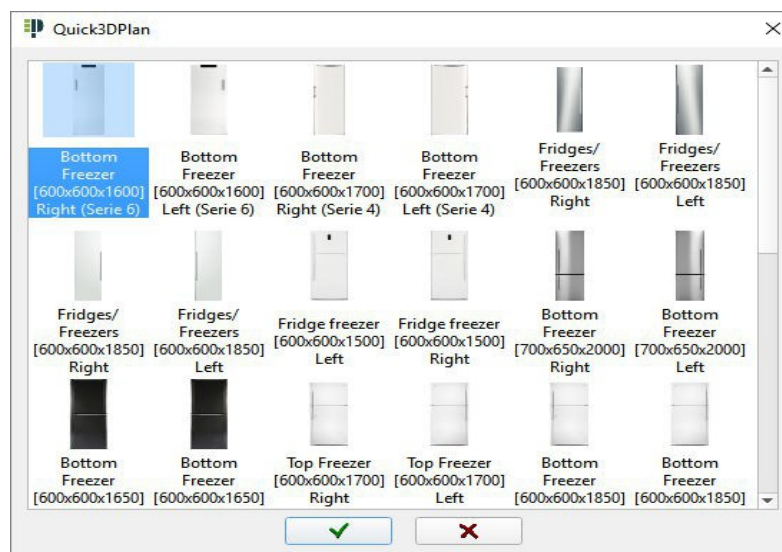
New integrated (undermounted) sinks are available.



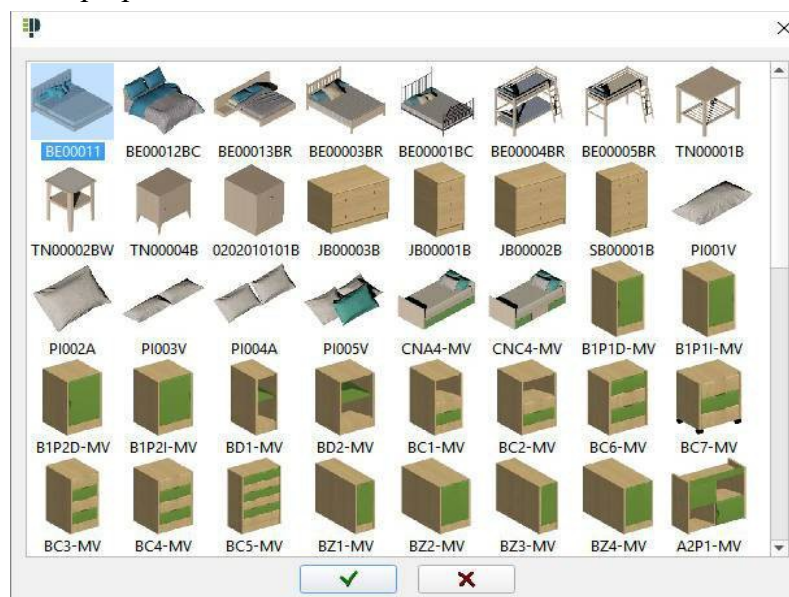
**Accessory catalog update:** New tables, chairs, stools, glassware, jars, crockery...



Preview of all the appliances in a thumbnail that will facilitate the selection.



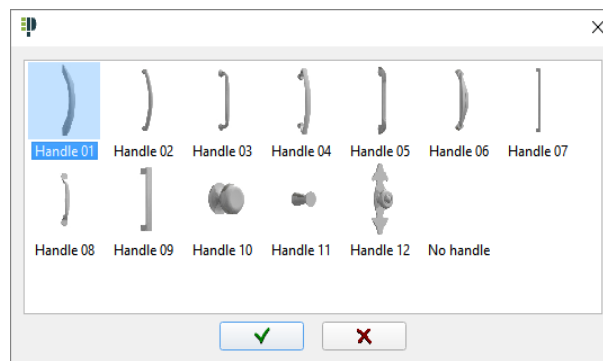
More than 80 new accessories in a new bedroom library: beds, bunk beds, bedside tables, shelves, drawers, chairs, tables, laptops, cushions, etc:



New high quality blinds and curtains have been added to the accessory catalog:



When selecting the handle model in the series dialog, all available models are shown in small images.



### Cabinet doors:

- Door material is not stretched anymore. The frame width of a door is identical on a tall cabinet and a drawer cabinet.
- Glass doors are transparent. You can insert accessories inside the cabinet and see them through the glass.
- The number of mullions on mullion doors depends on door dimensions.

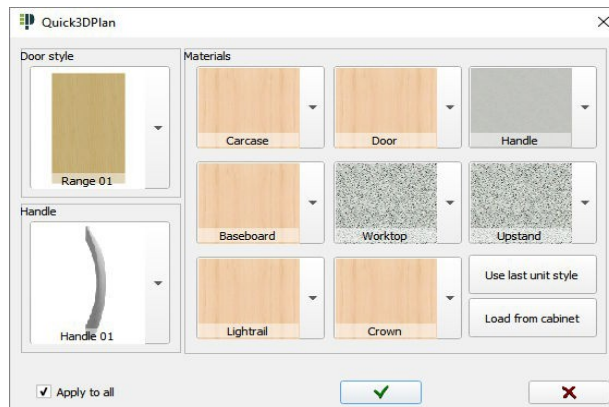


Two new gas and electrical water heaters have been added to the appliance catalog:





You can load the materials, door and handle models from a cabinet in the design in order to apply them to other cabinets.



Availability of **GOLA** cabinets as one more door style. It is not necessary to start the design with this type of cabinet. It can be applied to any cabinet previously inserted.



New frame face catalog to design traditional kitchens.

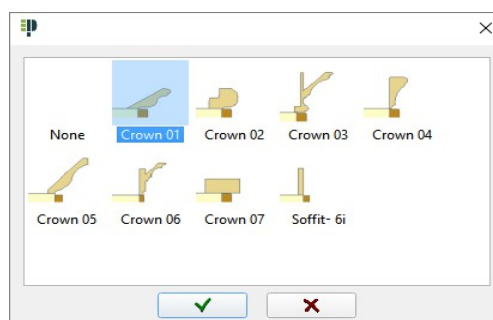


Improved step-by-step wizard that allows you to insert the room, doors, windows, furniture and appliances automatically with simple steps. New furnishing rules that will adapt the design to the designer's requirements.

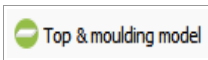
## 7.- Moldings



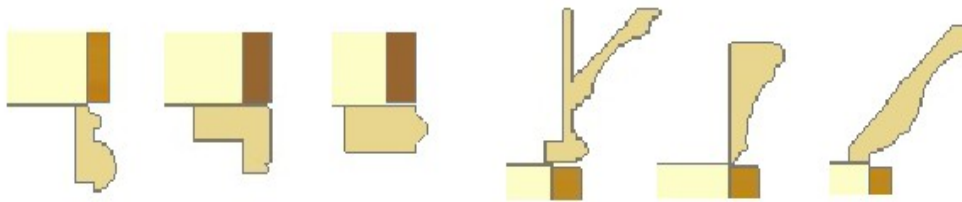
Preview of all available molding models with small images.



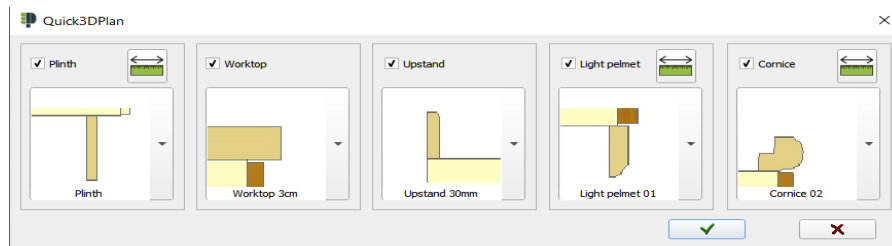




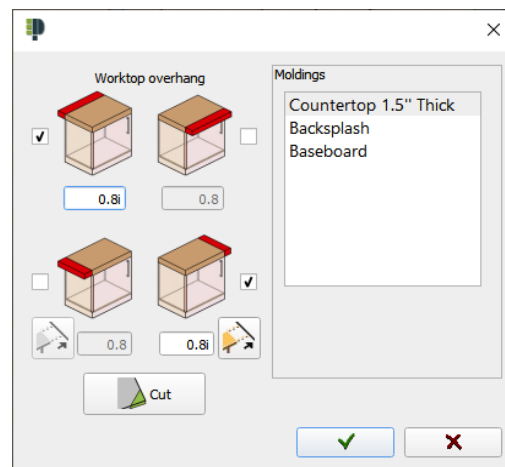
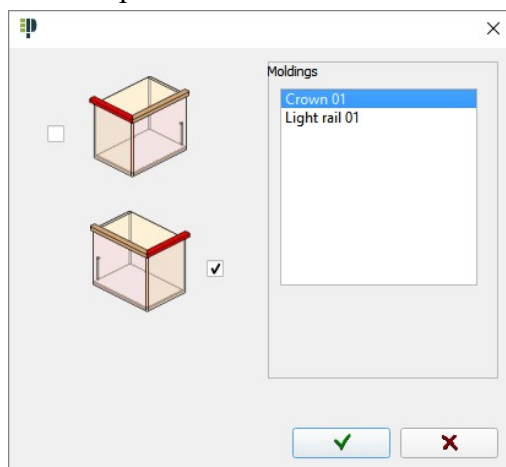
**Change moulding model:** You can change the crown molding and light rail model for a selected cabinet or for all the cabinets in the design. There are 6 new light rail models and 8 new crown molding models.



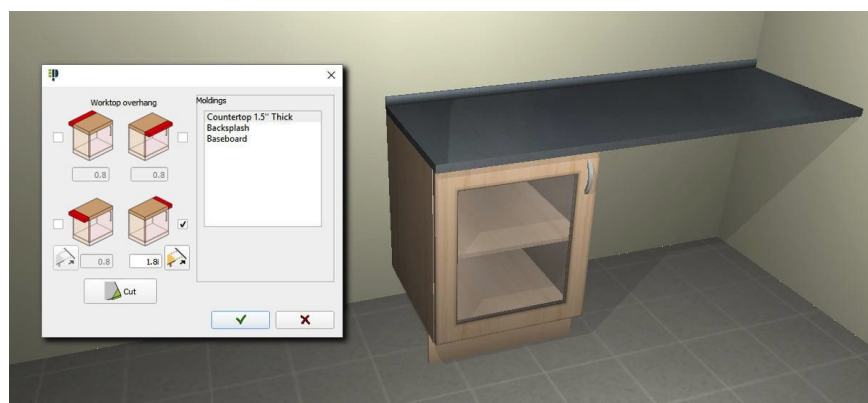
**Change moulding height:** You can modify the height of the baseboard, crown molding, light rail and backsplash and the countertop thickness for a selected cabinet or for all cabinets in the design.



The new Quick3DPlan® includes tools to edit the moldings and the countertop. Now you can add a return molding to a cabinet. You can also change the countertop overhang value for any side of a given countertop.

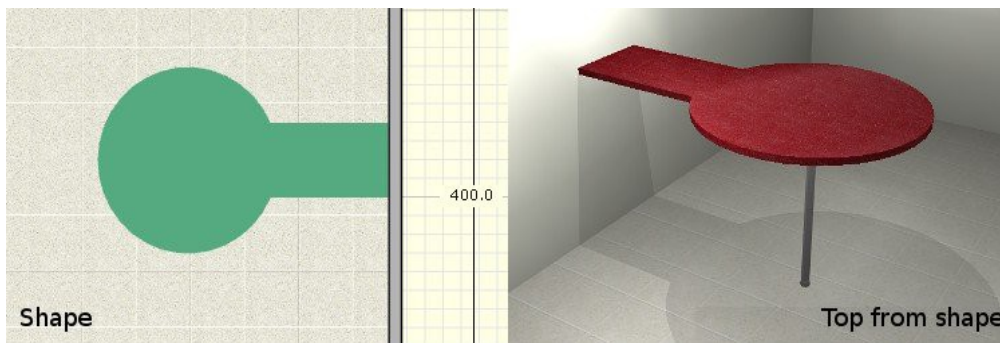


New option to extend a worktop (countertop) automatically on a wall.

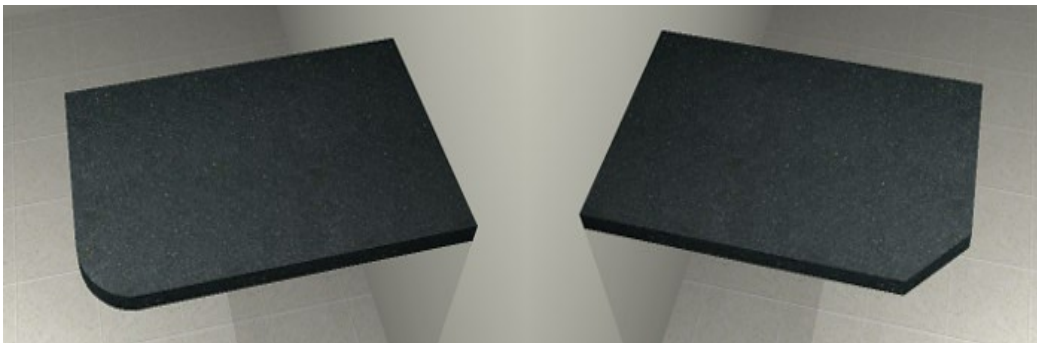




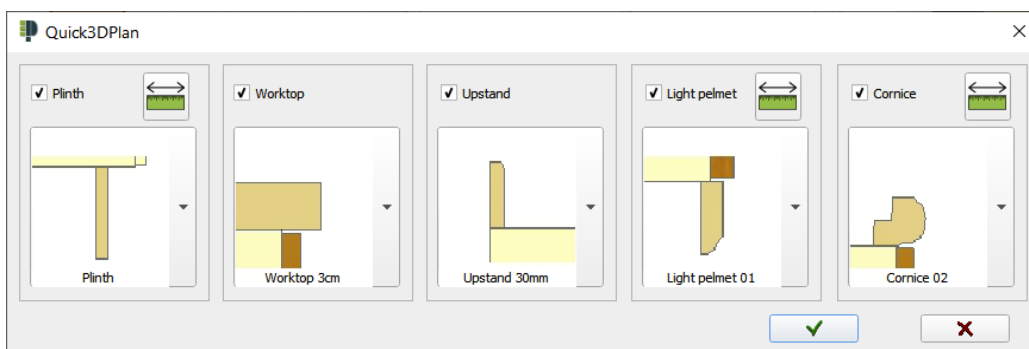
You can create worktops using predefined shapes. Once created, there are several options such as move, rotate, change material, adjust thickness or make a diagonal cut.



New option to make a *diagonal* or *curved* cut on worktops:

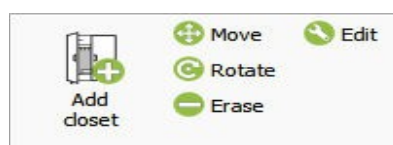


New dialog to change the model of the countertop, cornice and upstand and/or lightrail for a selected cabinet or all of them. It allows you to change the moulding measures and uncheck the moulding that you do not want to change.



## 8.- Closets

New tool to design modular furniture and wardrobes:

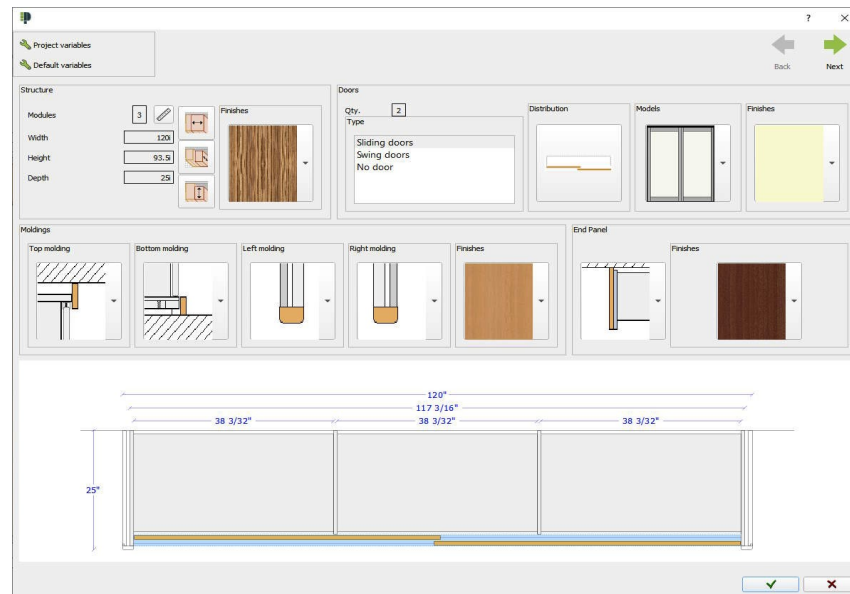


Add closet

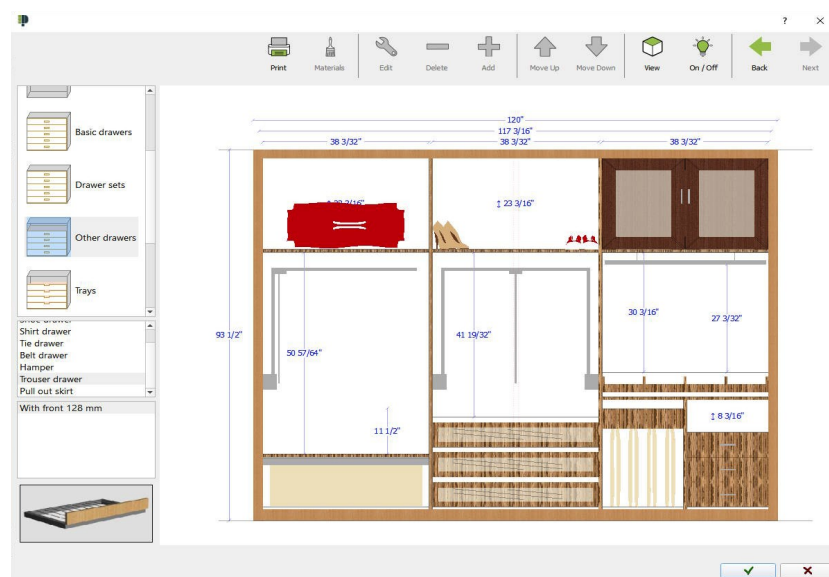
Move  
Rotate  
Erase

Edit

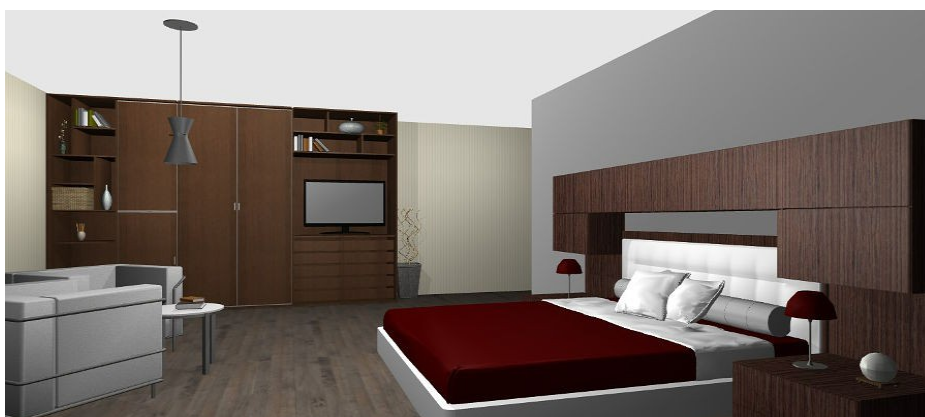
You will be able to select materials, mouldings, door systems and models and customize the structure with the desired number of modules and dimensions.



Design the interior of a wardrobe or closet in a quick and precise way adding shelves, drawers, dividers, accessories, etc...



Insert a wardrobe in a room and finish the design with the rest of furniture:



Right click on an inserted closet to see a menu with shortcuts to different functions: edit, move, rotate and erase.



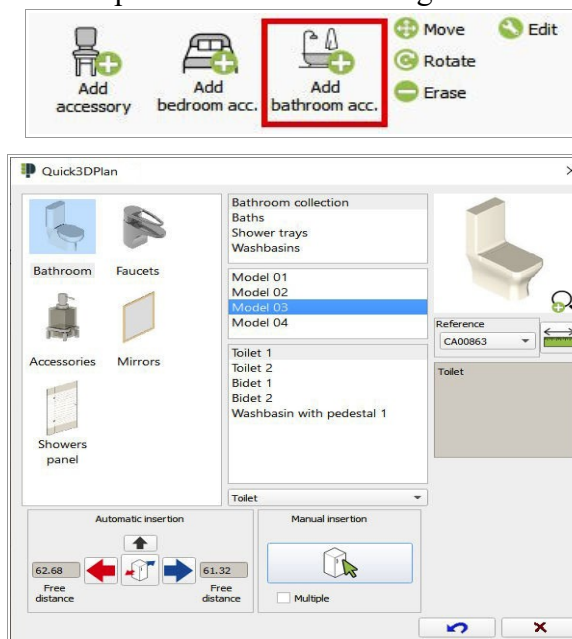
## 9.- Bathrooms

New catalogs and tools to design bathrooms in Quick3DPlan®. Start designing bathrooms with a lot of specific items:

- **Generate photorealistic images** of your bathroom designs and present your proposals with high quality to customers:

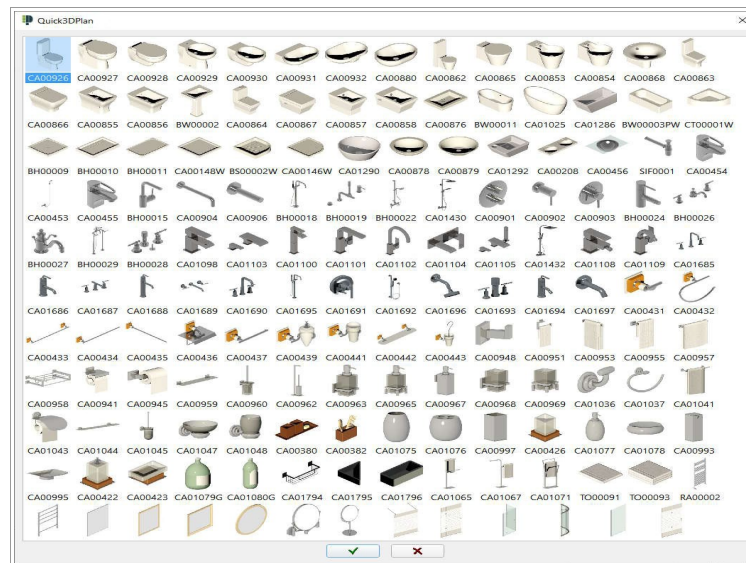


- **New button** to access the specific bathroom catalog:

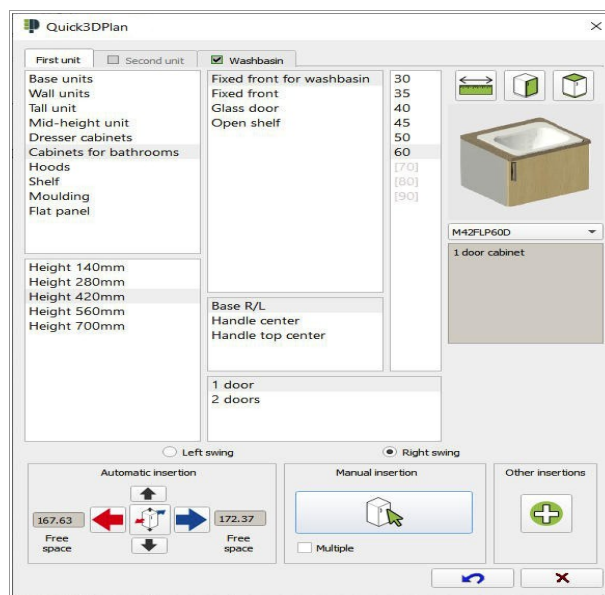




- The new bathroom catalog has **more than 130 items** such as mirrors, showers, bathtubs, toilets, taps, accesories, etc.



- In addition, a **new category** with bathroom cabinets with different heights and a new tab with built-in sinks have been added to the kitchen furniture section:

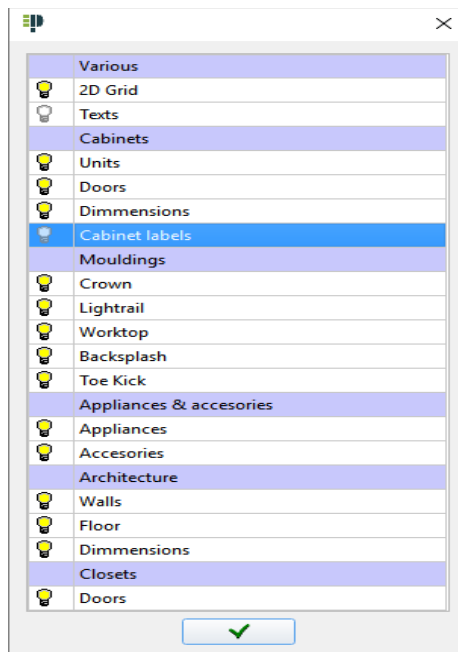


- Finally, **new models of smaller windows** have been added to be used in bathroom designs:



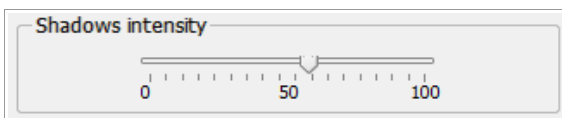
## 10.- Hide/Show objects

Display filters allow you to show or hide walls, floor, cabinets, accessories, appliances, text, and dimensions...



## 11.- 3D Views

**Enhanced image quality:** The 3D view shows the shadows generated by the inserted items. The quality of doors, handles and accessories has been improved. Materials have also been updated.



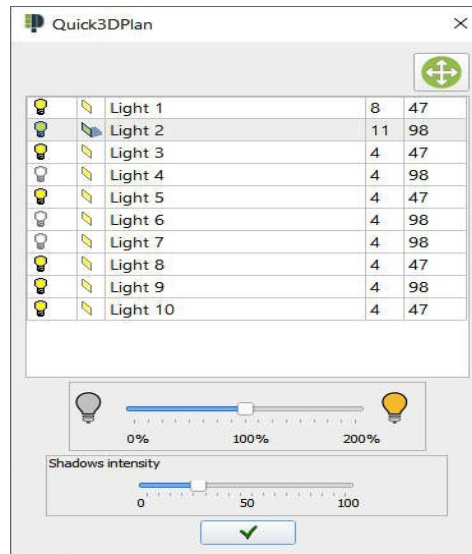
**Shadow intensity:** New tool to modify shadow intensity to make it darker or lighter. Changes are instantly shown on the screen and you can see how shadows change while moving a light.

3D wall and floor visualization has been improved to show softer lights and shadows.





When starting a new project, all lights are active by default. The shadow of each light can be turned on/off separately:

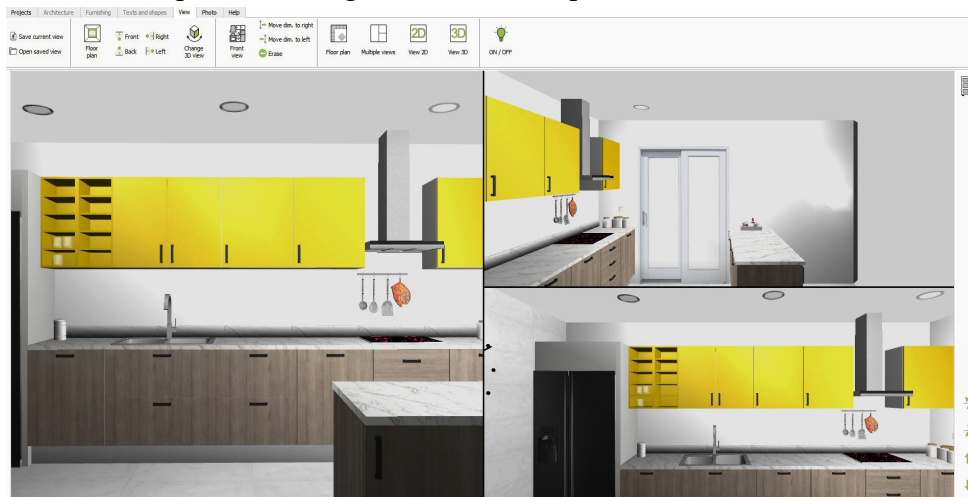


You can adjust the intensity of all the lights by clicking on the % button.

Door and furniture models have been improved, so they have more quality allowing you to generate 3D images with many more details.



You can visualize the design in multiple windows (from 2 to 4) using a different perspective in every view. You can also print the design with this multiple view:



## 12.- Photorealistic Images

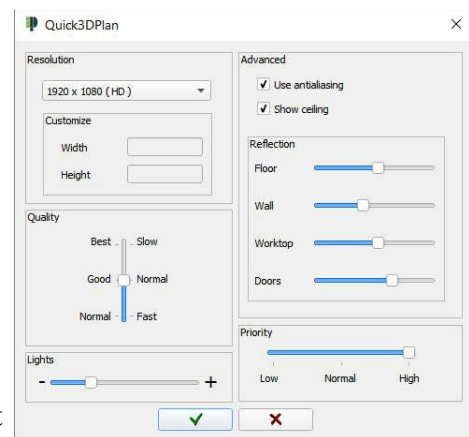


New render option that allows you to generate photorealistic images of your designs, that will improve the quality of your projects:

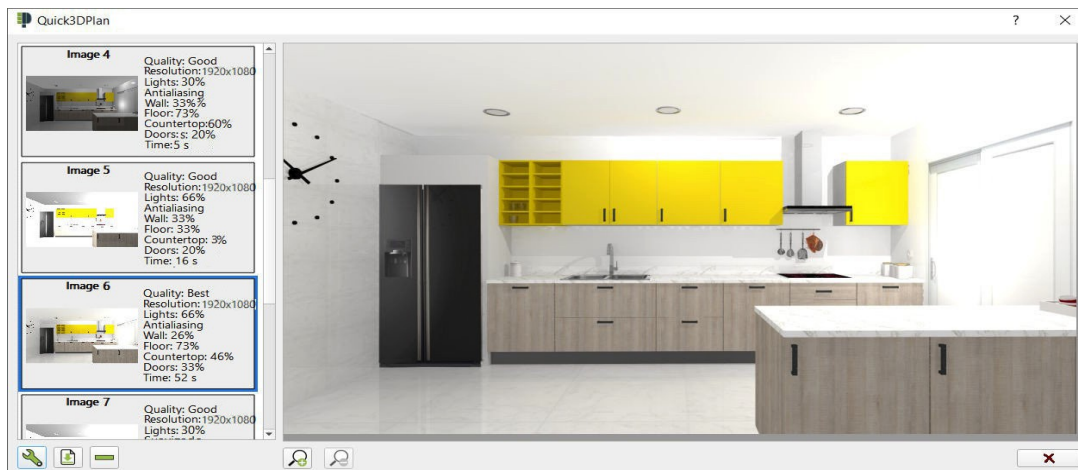


When creating photorealistic images you are able to:

- **Adjust the image resolution** to 8K (7608x4320) maximum.
- Choose between **3 quality levels**. The better the quality, the more time it will take to calculate.
- **Adjust all the lights** with just one click.
- **Using antialiasing** software will help erase the jagged lines and edges.
- The software will automatically **generate a ceiling** for the room.
- **Adjust the reflection levels** of the floor, walls, countertop and cabinet doors individually.
- Use **all the computer processor power**, or just one part so you can continue to work with other programs on your computer whilst the image is being generated.



You can also see a window with a "history" of all the renders made showing their characteristics (quality, resolution, lights, etc):





### 13.- Image editor

Add different filters and edit brightness, contrast or saturation with the new image editor:



### 14.- List of cabinets, appliances and accessories

Quick3DPlan® creates a list of cabinets, appliances and accessories with description, width, depth, height and door swing. This list can be exported to Excel.

Order	Reference	Description	Hinge	Width	Depth	Height
Cabinet						
1	B7RE90	Base L-shape corner unit 2 doors	-	90cm	58cm	70cm
2	A7RCV60D	Wall unit diagonal corner, 1 glass door	Right	60cm	33cm	70cm
3	B7F60D	Sink unit 1 door	-	60cm	58cm	70cm
4	B7ALV60	Dishwasher	-	60cm	58cm	85cm
5	B7P60	Hob unit 2 doors	-	60cm	58cm	70cm
6	A7CP560	Wall hood unit 2 doors	-	60cm	33cm	50cm
7	C7HM2G60	Tall micro and oven housing 2 pandrawers 2 doors	-	60cm	58cm	200cm
8	B7REG1	Base filler	-	1cm	58cm	70cm
9	B7N90	Base unit 2 doors	-	90cm	58cm	70cm
10	B7N80	Base unit 2 doors	-	80cm	58cm	70cm
11	B7EB20	Base unit bottle-rack, 1 pull-out door	-	20cm	58cm	70cm
12	A7BO15	Wall wine rack squares	-	15cm	33cm	70cm
13	A7N90	Wall unit 2 doors	-	90cm	33cm	70cm
14	A7N60D	Wall unit 1 door	Right	60cm	33cm	70cm
15	A7REG1	Wall Filler	-	1cm	33cm	70cm
Appliance						
-	T_0003	Tap-01	-	3.81cm	21.2cm	25.4cm
-	SNK004	Sink, 1 Square Bowl-01	-	50cm	50cm	1.016cm
-	DSW001	Dishwasher	-	60cm	58cm	85cm
-	CKT081	Ceramic Hob-01	-	60cm	51cm	1.2cm
-	HOD001	Plain Hood	-	60cm	30cm	5cm
-	MIC003	Microwave, white	-	60cm	30cm	40cm
-	O_0003	Oven, inox	-	60cm	56cm	60cm
Accessory						
-	TO00086BS	Mesa redonda	-	100cm	100cm	75cm
-	TAB0009C	Silla	-	44cm	50cm	90cm
-	CA00034S	Olla modelo 03, acero	-	24cm	20cm	13cm
-	CI00003	Tostadora, Acero inoxidable	-	40cm	21cm	22.5cm
-	CU00017	Juego de platos	-	45.5cm	40cm	23.5cm
-	CA00105WS	Platero decorativo 1, blanco	-	24.5cm	49cm	24.5cm